



ELECTRONIC COPY

LABORATORY GROWN DIAMOND REPORT

Description	LABORATORY GROWN DIAMOND
Shape and Cutting Style	OVAL BRILLIANT
Measurements	9.55 X 6.80 X 4.23 MM

GRADING RESULTS

Carat Weight	1.71 CARAT
Color Grade	G
Clarity Grade	VS 1

ADDITIONAL GRADING INFORMATION

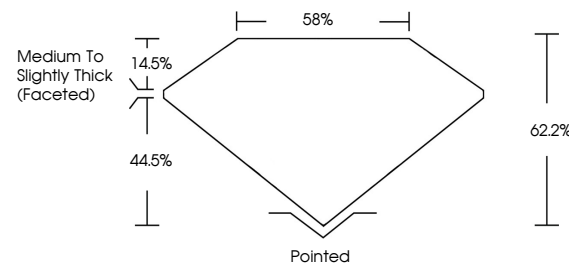
Polish	EXCELLENT
Symmetry	EXCELLENT
Fluorescence	NONE

Inscription(s) **LABGROWN 1(31) LG564356478**
 Comments: This Laboratory Grown Diamond was created by Chemical Vapor Deposition (CVD) growth process and may include post-growth treatment.
 Type IIa

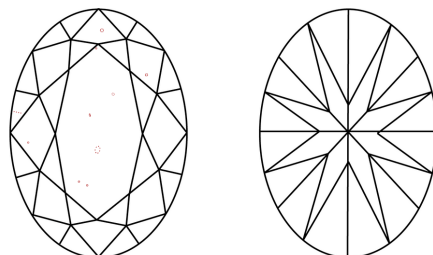
LABORATORY GROWN DIAMOND REPORT

LG564356478
Report verification at igi.org

PROPORTIONS



CLARITY CHARACTERISTICS



KEY TO SYMBOLS

Red symbols indicate internal characteristics.
Green symbols indicate external characteristics.

LABORATORY GROWN
DIAMOND REPORT

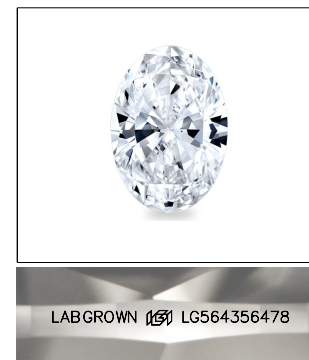
GRADING SCALES

CLARITY

IF	VVS ¹⁻²	VS ¹⁻²	SI ¹⁻²	I ¹⁻³
Internally Flawless	Very Very Slightly Included	Very Slightly Included	Slightly Included	Included

COLOR

D E F G H I J Faint Very Light Light

LASERSCRIBESM

Sample Image Used



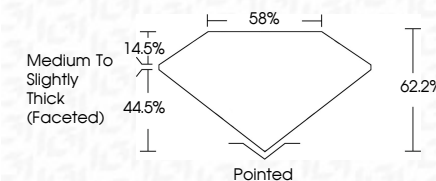
© IGI 2020, International Gemological Institute

FD - 10 20

www.igi.org

LABORATORY GROWN DIAMOND REPORT

January 17, 2023	
IGI Report Number	LG564356478
Description	LABORATORY GROWN DIAMOND
Shape and Cutting Style	OVAL BRILLIANT
Measurements	9.55 X 6.80 X 4.23 MM
GRADING RESULTS	
Carat Weight	1.71 CARAT
Color Grade	G
Clarity Grade	VS 1



ADDITIONAL GRADING INFORMATION

Polish	EXCELLENT
Symmetry	EXCELLENT
Fluorescence	NONE
Inscription(s)	LABGROWN (157) LG564356478

Comments: This Laboratory Grown Diamond was created by Chemical Vapor Deposition (CVD) growth process and may include post-growth treatment.
Type IIa



January 17, 2023	IGI Report No. IGL64356478	1.71 CARAT	G
OVAL BRILLIANT			VS 1
9.55 X 6.80 X 4.23 MM		62.2%	85%
Color Grade	Clarity Grade	Depth	Table
			Grade
			Medium to Slightly Thick Faceted
			Pointed
			EXCELLENT
			EXCELLENT
			NONE
			LAB-GROWN (GSI LGS64356478)

Comments:
 1. This Laboratory Grown Diamond was created by Chemical Vapor Deposition (CVD) growth process and may include natural inclusions with treatment.
 2. Type Ia