



# INTERNATIONAL GEMOLOGICAL INSTITUTE

ELECTRONIC COPY

## LABORATORY GROWN DIAMOND REPORT

LG561277305

### IGI LABORATORY GROWN DIAMOND ID REPORT

January 3, 2023

IGI Report Number **LG561277305**

**ROUND CORNERED  
RECTANGULAR MODIFIED  
BRILLIANT**

**7.34 X 4.19 X 2.68 MM**

Carat Weight	0.78 CARAT
Color Grade	E
Clarity Grade	VS 1
Polish	EXCELLENT
Symmetry	EXCELLENT
Fluorescence	NONE
Inscription(s)	LABGROWN (IGI) LG561277305

Comments: This Laboratory Grown Diamond was created by Chemical Vapor Deposition (CVD) growth process and may include post-growth treatment. Type Ila

## LABORATORY GROWN DIAMOND REPORT

### IGI LABORATORY GROWN DIAMOND IDENTIFICATION REPORT

January 3, 2023

IGI Report Number

LG561277305

Description

LABORATORY GROWN DIAMOND

Shape and Cutting Style

ROUND CORNERED RECTANGULAR  
MODIFIED BRILLIANT

Measurements

7.34 X 4.19 X 2.68 MM

### GRADING RESULTS

Carat Weight 0.78 CARAT

Color Grade E

Clarity Grade VS 1

### ADDITIONAL GRADING INFORMATION

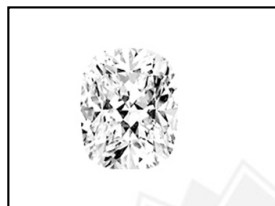
Polish EXCELLENT

Symmetry EXCELLENT

Fluorescence NONE

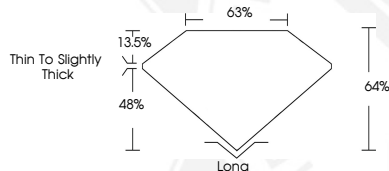
Inscription(s) LABGROWN (IGI) LG561277305

Comments: This Laboratory Grown Diamond was created by Chemical Vapor Deposition (CVD) growth process and may include post-growth treatment. Type Ila



LABGROWN (IGI) LG561277305

**LASERSCRIBE** SM  
Sample Images Used



THIS DOCUMENT WAS PRODUCED WITH THE FOLLOWING SECURITY MEASURES: SPECIAL DOCUMENT PAPER, INK SCREENS, WATERMARK, BACKGROUND DESIGN, HOLOGRAM AND OTHER SECURITY FEATURES NOT LISTED AND DO EXCEED DOCUMENT SECURITY INDUSTRY GUIDELINES.

For terms & conditions and to verify this report, please visit [www.igi.org](http://www.igi.org)

### IGI LABORATORY GROWN DIAMOND ID REPORT

January 3, 2023

IGI Report Number **LG561277305**

**ROUND CORNERED  
RECTANGULAR MODIFIED  
BRILLIANT**

**7.34 X 4.19 X 2.68 MM**

Carat Weight	0.78 CARAT
Color Grade	E
Clarity Grade	VS 1
Polish	EXCELLENT
Symmetry	EXCELLENT
Fluorescence	NONE
Inscription(s)	LABGROWN (IGI) LG561277305

Comments: This Laboratory Grown Diamond was created by Chemical Vapor Deposition (CVD) growth process and may include post-growth treatment. Type Ila